

DMAP DEER HARVEST DATA SHEET

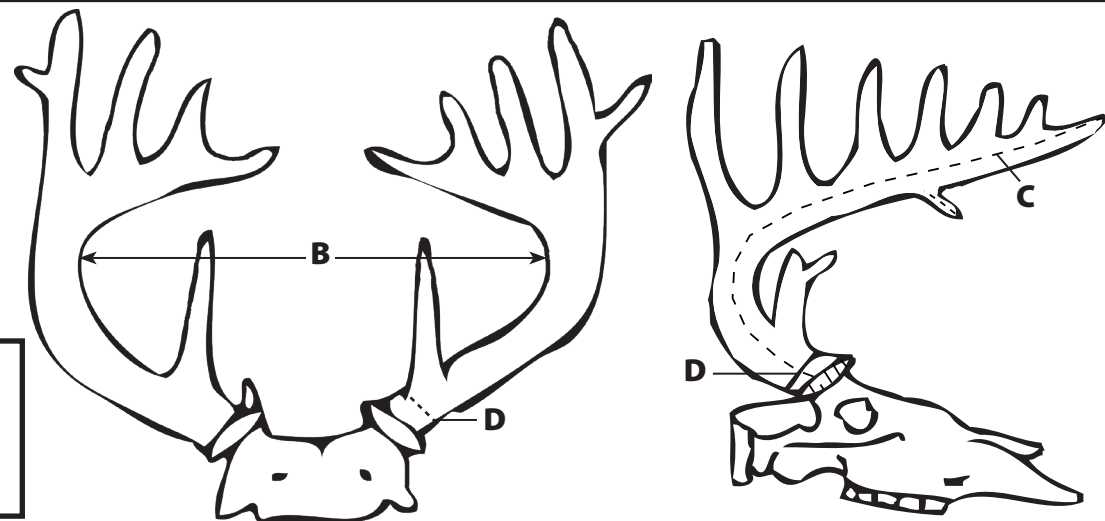
- DMAP Tag Number** - The number of the DMAP tag (antlered or antlerless) which was placed on the deer.
- Harvest Date** - Enter the month and day. All deer must be logged on the sheet the day they were harvested.
- Hunter's Name** - Name of hunter harvesting deer.
- Hunter's License Number** - Hunter's LDWF number or Lifetime License number.
- Sex of Deer** - Male (B) or Female (D)
- Deer Weight** - Weight of deer, use only weights obtained from accurate scales. DO NOT ESTIMATE WEIGHTS. Record weights as live (not gutted) or empty (gutted).
- Milk Present** - Check each female harvested for lactation. If milk or fluids can be squeezed from teats, write "yes" in the box. The udder can be cut open to confirm the presence of milk. This is very important biological data indicating reproduction information.
- Antler Measurement** - Record data from both antlers.
 - Number of Points* - Total points one inch long or longer.
 - Inside Spread* - Widest inside spread measurement between main beam of antlers.
 - Main Beam Length* - Measure main beam from antler burr above eye to tip. This measurement is also required for spikes.
 - Circumference of Main Beam* - Measure the smallest circumference at a point between antler burr and first point (brow tine).
- Comments** - Any information on deer abnormalities, hunting conditions or habitat changes that could influence deer health or deer hunting.
- Removal of deer jawbones for aging (see diagram).

JAWBONE HANDLING INSTRUCTIONS

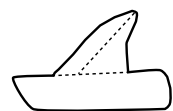
- Deer jawbones must be cleaned of as much flesh as possible and completely dried. A wire fish basket works well as a storage container, which allows bones to dry and protects them from scavengers.
- Deer jawbones are labeled to correspond to record keeping data sheet by permanent marker or aluminum tag firmly attached to jawbone. If the jawbone cannot be linked to the harvest data sheet, the biologist will not be able to record the age data for your annual report development.
- Do not freeze or store jawbones in sealed plastic bags.
- Properly label box or bag containing jawbones with name of DMAP club or cooperator as it appears on deer harvest record sheet.

REQUIRED ANTLER MEASUREMENTS

- A** Number of Points
- B** Inside Spread
- C** Length of main Beam
- D** Circumference



Detail of Point Measurement



All points must be 1 inch in length and have a base width of 1 inch or less.

Contact a Private Lands Biologist at one of LDWF's Field Offices for Applications and Information

Minden Office: 318-371-3050
9961 Highway 80
Minden, La. 71055

Monroe Office : 318-343-4044
368 CenturyLink Drive
Monroe, La. 71203

Pineville Office: 318-487-5885
765 Maryhill Road
Pineville, LA 71360

Lake Charles Office: 337-491-2575
1025 Tom Watson Rd.
Lake Charles, LA 70615

Lafayette Office: 337-262-2080
200 Dulles Drive
Lafayette, La. 70506

Hammond Office: 985-543-4777
42371 Phyllis Ann Drive
Hammond, La. 70403

Baton Rouge Office
2000 Quail Drive
Baton Rouge, La. 70808

Johnathan Bordelon, Deer Program Manager 318-487-5334

Brad Kennon, Deer Program Specialist 318-362-3161

www.wlf.la.gov/page/dmap

NOTE

LDWF is seriously concerned about the potential threat posed by Chronic Wasting Disease (CWD) in Louisiana deer. Please report any sick or abnormally acting deer to your local LDWF wildlife biologist.

THE HUNTER'S PLEDGE

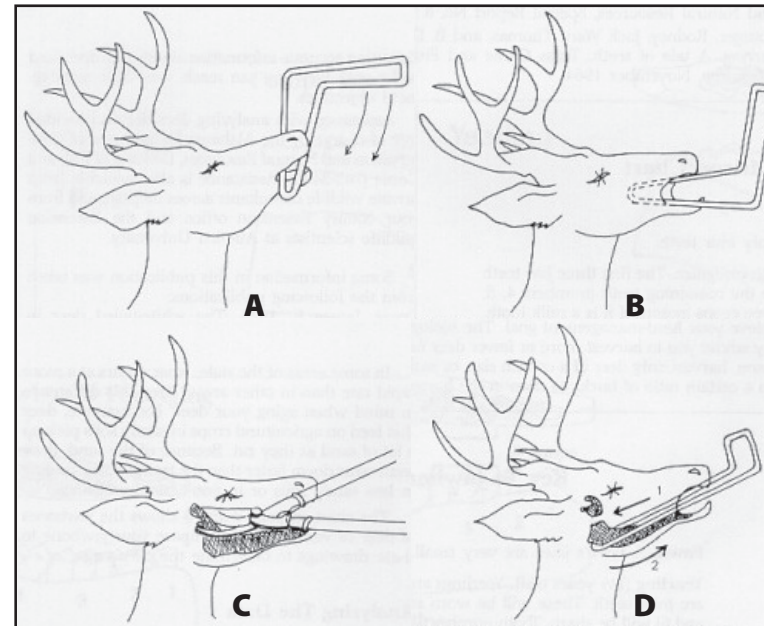
- Respect the Environment and Wildlife
- Respect Property and Landowners
- Show Consideration for Non-hunters
- Hunt Safely
- Know and Obey the Laws
- Support Wildlife and Habitat Conservation
- Pass on an Ethical Hunting Tradition
- Strive to Improve Outdoor Skills and Understanding of Wildlife
- Hunt Ethically

To Report a Suspected Wildlife Violation,
Call Operation Game Thief

1-800-442-2511
24 hours a day

This public document is published at a unit cost of \$.57. 1,500 copies of this public document were published in this first printing at a total cost of \$849.85. The total cost of all printings of this document including reprints is \$849.85. This document was published by OTS-Production Support Services, 627 North 4th St, Baton Rouge, LA 70802 for the Louisiana Department of Wildlife & Fisheries to provide information on the Deer Management Assistance Program (DMAP). This material was printed in accordance with standards for printing by State Agencies established in R.S. 43.31. Printing of this material was purchased in accordance with the provisions of Title 43 of the Louisiana Revised Statutes.

JAWBONE EXTRACTION



- A. Pry the mouth open.**
- B. Loosen the muscles between the teeth and cheek.**
- C. Carefully cut the jawbone.**
- D. Slip the puller around the end of the jawbone and pull forward.**



Deer Management Assistance Program

DMAP

A program designed to help you manage deer on your property

Revised June 2023

Photo by Shutterstock.com



Louisiana Department of Wildlife and Fisheries
Wildlife Division Management & Research

DMAP PROGRAM

The Deer Management Assistance Program (DMAP) provides optimal opportunities to manage deer populations through prescribed deer harvests. Region and Program biologists conduct habitat surveys on DMAP land and make deer habitat and harvest management recommendations to the cooperators. Physical data from harvested deer are collected by cooperators and submitted to biologists for evaluation. Age, body weight, antler development, and lactation data are collected. Biologists examine these data and evaluate the growth and development of deer by age class. Growth and development trends are identified and used to make management recommendations regarding the herd. Individual cooperator reports are combined with others to develop parish and regional perspectives. Similarly, parish reports are combined into a state population report that is used in the Louisiana Department of Wildlife and Fisheries' (LDWF) hunting regulations development process.

The DMAP Program has improved the deer age structure and sex ratios on enrolled properties. Historically, states in the southeast found that 1.5-year age class bucks accounted for 75% or more of the antlered buck harvest. In contrast, the 1.5-year old buck harvest on Louisiana DMAP lands today is around 15% or less of the antlered buck harvest and cooperators are harvesting more antlerless deer than antlered bucks. This is desirable because it creates and maintains a healthy population of both bucks and does.

DMAP ENROLLMENT AND RETURNED RECORD DATES

**Enrollment of a New Cooperator
by AUGUST 1**

**Annual Renewal Active Cooperators
by SEPTEMBER 1**

**Payment of DMAP Fees
by SEPTEMBER 15**

**All Records Data Sheet Returned
by 30 days after the close of season**

DMAP PROGRAM RULES AND REGULATIONS

- **Antlered Bucks** - An antlered buck is a deer with visible antlers of hardened bony material, which has broken through the skin naturally.
- **Antlerless Deer** - A female deer (doe) or young buck "Button Buck" that has no visible hardened antlers.
- **Antlerless deer harvested on DMAP enrolled property are not to be validated (reported) by phone or internet.** Antlered deer harvested on Tier 2, Tier 3 or Tier 4 DMAP enrolled property may be tagged electronically, but MUST be validated by recording the deer on the DMAP Deer Kill Record.
- Deer harvested using DMAP antlered or antlerless tags do not count towards hunters' season or daily bag limits. Hunters' license tags may still be used on non-DMAP enrolled property.
- The DMAP property cooperator will be the person listed on the application as the contact person and will serve as the liaison with LDWF. This person shall be responsible for the tags and provide harvest records to LDWF at the end of the hunting season or at any

time requested during the season. Cooperators will be given 48 hours to provide requested documentation. If a hunting camp is used, it is recommended to keep records at this location.

- DMAP cooperators agree to allow LDWF personnel access to their lands for management surveys or other inspections deemed appropriate.
- Property enrolled in DMAP must be posted with DMAP signs at a minimum of 1,000-foot intervals along any public road frontage and at all points of ingress and egress used by motorized vehicles to access the property.
- Assigned DMAP tags are valid only on enrolled DMAP lands for which they have been issued. All unused tags and harvest data shall be returned by 30 days after the close of the season to the LDWF office that issued tags.
- Tier 1 requires antlered and antlerless tags, and Tiers 2, 3 and 4 require antlerless tags.
- DMAP tags must be used during the entire deer-hunting season, which includes archery, primitive and modern firearm seasons.
- The DMAP tag must be attached to the deer in such a manner that it cannot be removed before the deer is transported.
- The DMAP tag must remain with the deer in the field, camp, en route to domicile of its possessor or stored at a cold storage facility. The tag is no longer required when the meat is identifiable as food rather than wild game.
- Documentation of all deer harvested in DMAP shall be kept daily on an official DMAP Deer Kill Record. Mandatory records include DMAP tag number, harvest date, hunter's name, LDWF license number (annual or lifetime) and required biological data from harvested deer. Mandatory biological data on Tier 1 and 2 includes (jawbones), weight, antler measurements and lactation of females (not required for Tier 3 and 4).
- Failure of the cooperator to follow these rules and regulations may result in suspension and/or cancellation of the property's participation in the DMAP program.
- Antlerless deer may be harvested any day of deer season on property enrolled in DMAP provided the hunter possesses a DMAP tag at time of harvest.

DMAP LEVELS OF PARTICIPATION

DMAP cooperators property must contain at least 50% forest or natural habitat; a current map of the property is required.

TIER 1: 1,000 acres or more, associated with quality or trophy buck management. Strategies include increased doe harvest to maintain deer herds at balanced levels and allowing bucks to reach older ages before harvest. Mandatory DMAP antlered and antlerless tags required along with complete harvest data collection.

Deer harvest is restricted to antlered and antlerless deer quotas established by biologists for enrolled property. Hunters must place an antlered or antlerless DMAP tag on each deer harvested. There are no daily or season deer limits for antlered or antlerless deer harvested by a hunter. This tier requires the mandatory collection of biological data, including jaw bones, from each deer harvested. (Special tag allotment rules apply).

The department may grant season extensions to hunt deer with any legal weapon, up to either 15 days prior to or after the established season framework for the regular deer area season, if requested by the DMAP level 1 cooperator in order to fulfill property-specific objectives and goals if biological reasons and limitations exist that support such extensions. Additionally, the department may grant season extensions to hunt rabbits and squirrels by any legal means for up to 10 days after the established rabbit and squirrel season framework, if requested by the DMAP level 1 cooperator in order to fulfill property-specific objectives and goals if biological reasons and limitations exist that support such extensions.

TIER 2: 500 acres or more, associated with quality deer management. Complete harvest data collection mandatory. Only antlerless DMAP tags normally issued.

Antlerless deer harvest is restricted to antlerless deer quota for enrolled property. Hunters must place an antlerless DMAP tag on each antlerless deer harvested. There is no daily or season limit for antlerless deer harvested by a hunter. Antlered deer must be tagged with hunter's license tags (unless antlered DMAP deer tags are issued). The antlered deer limit is one per day. The antlered deer season limit is the same as the respective Deer Area. Tier 2 requires the mandatory collection of biological data, including jaw bones, from each deer harvested.

TIER 3: 40 acres or more, documentation of total number of antlered and antlerless deer required. Only antlerless DMAP tags available.

Antlerless deer harvest is restricted to antlerless deer quota for enrolled property. Hunters must place an antlerless DMAP tag on each antlerless deer harvested. There is no daily or season limit for antlerless deer harvested by a hunter. Antlered deer must be tagged with hunter's license tags. The antlered deer limit is one per day. The antlered deer season limit is the same as the respective Deer Area. Tier 3 only requires that the total harvest of both bucks and does be reported on provided forms.

TIER 4: No acreage minimum, documentation of total number of antlered and antlerless deer required. Only available for nuisance deer issues such as crop or lawn depredation. Only antlerless tags issued.

PROCEDURES FOR USING DMAP TAGS

TIER 1 (Antlered and Antlerless DMAP Tags Issued)

You've harvested a deer. Take the appropriate antlered or antlerless DMAP tag and attach the tag to the deer.

- Bring the deer to whatever facility your club has where records are kept and data is collected (even if it's a residence).
- Record DMAP tag number on data sheet.
- Collect all required biological data from deer and record on data sheet.
- You are legal and your deer is validated. You can proceed with the cleaning process. Do not call in any information.

TIER 2 (Antlerless DMAP Tags Issued)

You've harvested an antlerless deer (doe or button buck). Take an antlerless DMAP tag and attach the tag to the deer.

- Bring the deer to whatever facility your club has where records are kept and data is collected (even if it's a residence).
- Record antlerless DMAP tag number on data sheet.
- Collect all required biological data from deer and record on data sheet.
- You are legal and your deer is validated. You can proceed with the cleaning process. Do not call in any information.

You've harvested an antlered deer. Two options are available.

Option 1: Detach one of your antlered deer tags from your hunting license. Record the date and parish on the tag and affix it to the carcass with string, wire, etc.

- Bring the deer to whatever facility your club has where records are kept and data is collected (even if it's a residence).

- Record "Club ID Number and Deer Number" on the report card portion of your license. (Example Club ID 70285 deer #7) [70285-7]
- Collect all required biological data from deer and record on data sheet.
- You are legal and your deer is validated. You can proceed with the cleaning process. Do not call in any information

Option 2: Electronically tag your antlered deer by utilizing text-to-tag, tagging through the LDWF web portal or via LA Wallet. Select DMAP as land type during the menu selection. Your antlered deer has been successfully tagged electronically. Follow the steps below to validate.

- Bring the deer to whatever facility your club has where records are kept and data is collected (even if it is a residence).
- Collect all required biological data from deer and record on data sheet.
- You are legal and your deer is validated. You can proceed with the cleaning process. Do not call in any information.

TIER 3 & 4 (ONLY ANTLERLESS DMAP TAGS ISSUED)

You've harvested an antlerless deer (doe or button buck). Take an antlerless DMAP tag and attach the tag to the deer.

- Bring the deer to whatever facility your club has where records are kept and data is collected (even if it is a residence).
- Record antlerless DMAP tag number on data sheet.
- Collect all required data and record on data sheet.
- You are legal and your deer is validated. You can proceed with the cleaning process. Do not call in any information.

You've harvested an antlered deer. Two options are available

Option 1: Detach one of your antlered deer tags from your hunting license. Record the date and parish on the tag and affix it to the carcass with string, wire, etc.

- Bring the deer to whatever facility your club has where records are kept and data is collected (even if it is a residence).
- Record "Club ID Number and Deer Number" on the report card portion of your license. (Example Club ID 70285 deer #7) [70285-7]
- Collect all required data and record on data sheet.
- You are legal and your deer is validated. You can proceed with the cleaning process. Do not call in any information.

Option 2: Electronically tag your antlered deer by utilizing text-to-tag, tagging through the LDWF web portal, or via LA Wallet. Select DMAP as land type during the menu selection. Your antlered deer has been successfully tagged electronically. Follow the steps below to validate.

- Bring the deer to whatever facility your club has where records are kept and data is collected (even if it is a residence).
- Collect all required data from deer and record on data sheet.
- You are legal and your deer is validated. You can proceed with the cleaning process. Do not call in any information.

DMAP PROGRAM FEE SCHEDULE

TIER 1		TIER 2		TIER 3		TIER 4
Acres	Fee	Acres	Fee	Acres	Fee	No minimum acreage and no fee.
1,000-1,500	\$250	500-1,500	\$150	40-500	\$100	
1,501-10,000	\$300	1,501-10,000	\$200	501-1,500	\$150	
10,001-20,000	\$500	10,001-20,000	\$500	1,501-10,000	\$200	
20,001-50,000	\$1,500	20,001-50,000	\$1,500	10,001-20,000	\$500	
50,001-75,000	\$2,500	50,001-75,000	\$2,500	20,001-50,000	\$1,500	
75,001+	\$3,750+	75,001+	\$3,750+	50,001-75,000	\$2,500	
				75,001+	\$3,750+	